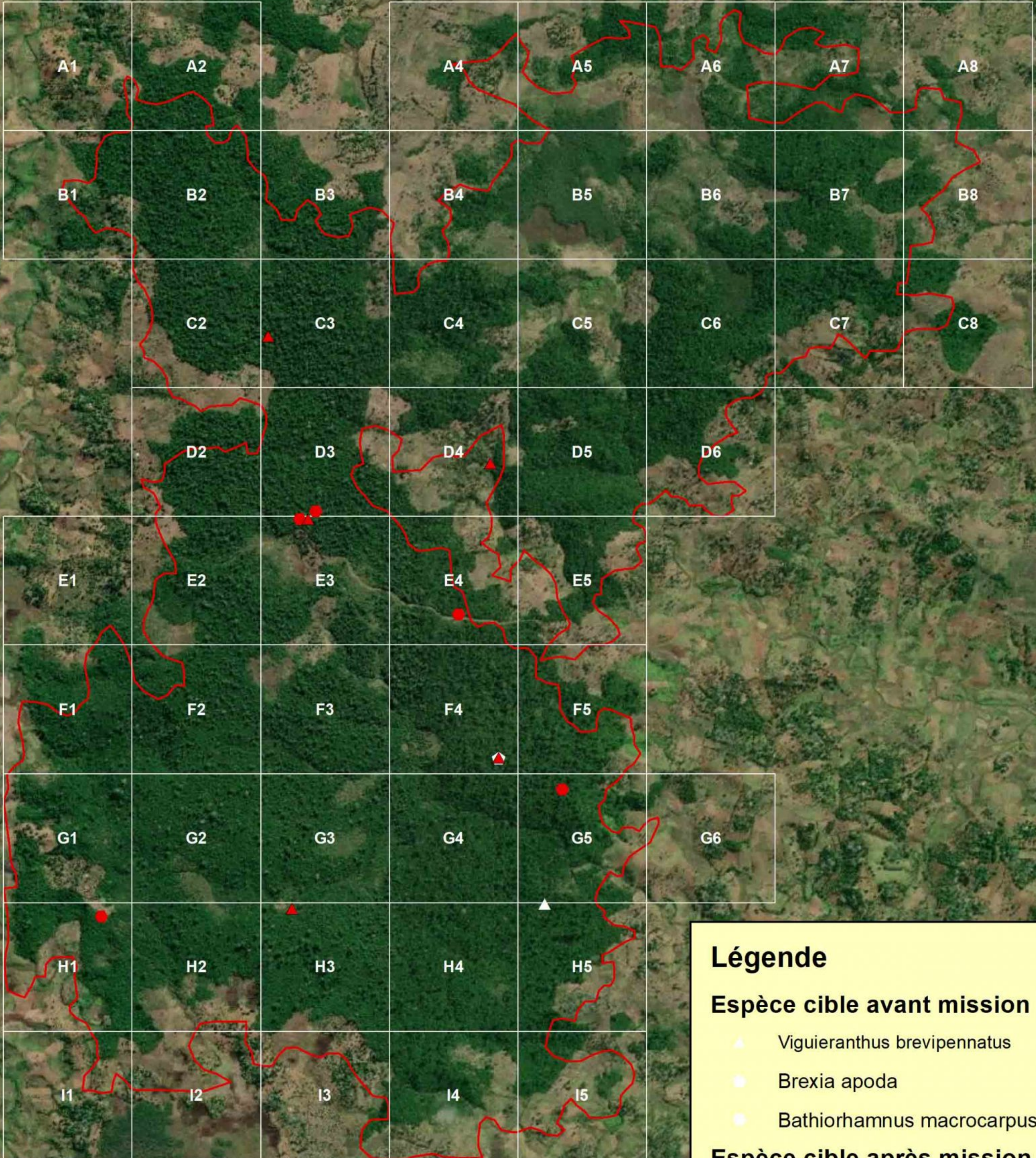


47°28'55"E 47°29'20"E 47°29'35"E 47°29'50"E 47°30'5"E 47°30'20"E 47°30'35"E 47°30'50"E 47°31'5"E



RALAINAORINA Toky Niaina, 2021



Légende

Espèce cible avant mission

- ▲ *Vigueranthus brevipennatus*
- *Brexia apoda*
- *Bathiorhamnus macrocarpus*

Espèce cible après mission

- ▲ *Vigueranthus brevipennatus*
- *Bathiorhamnus macrocarpus*
- ▭ Limite Agnakatrika
- ▭ Parcelle 500 x 500 m



Source: Esri, Maxar, GeoEye, Earthstar Geographics, CNES/Airbus DS, USDA, USGS, AeroGRID, IGN, and the GIS User Community

47°28'55"E 47°29'20"E 47°29'35"E 47°29'50"E 47°30'5"E 47°30'20"E 47°30'35"E 47°30'50"E 47°31'5"E

23°29'15"S
23°29'30"S
23°29'45"S
23°30'0"S
23°30'15"S
23°30'30"S
23°30'45"S
23°31'0"S
23°31'15"S
23°31'30"S
23°31'45"S
23°32'0"S
23°32'15"S
23°32'30"S

23°29'15"S
23°29'30"S
23°29'45"S
23°30'0"S
23°30'15"S
23°30'30"S
23°30'45"S
23°31'0"S
23°31'15"S
23°31'30"S
23°31'45"S
23°32'0"S
23°32'15"S
23°32'30"S